

Foster Downstream Passage PDT WFFDWG Update



U.S. ARMY

US Army Corps of Engineers
BUILDING STRONG

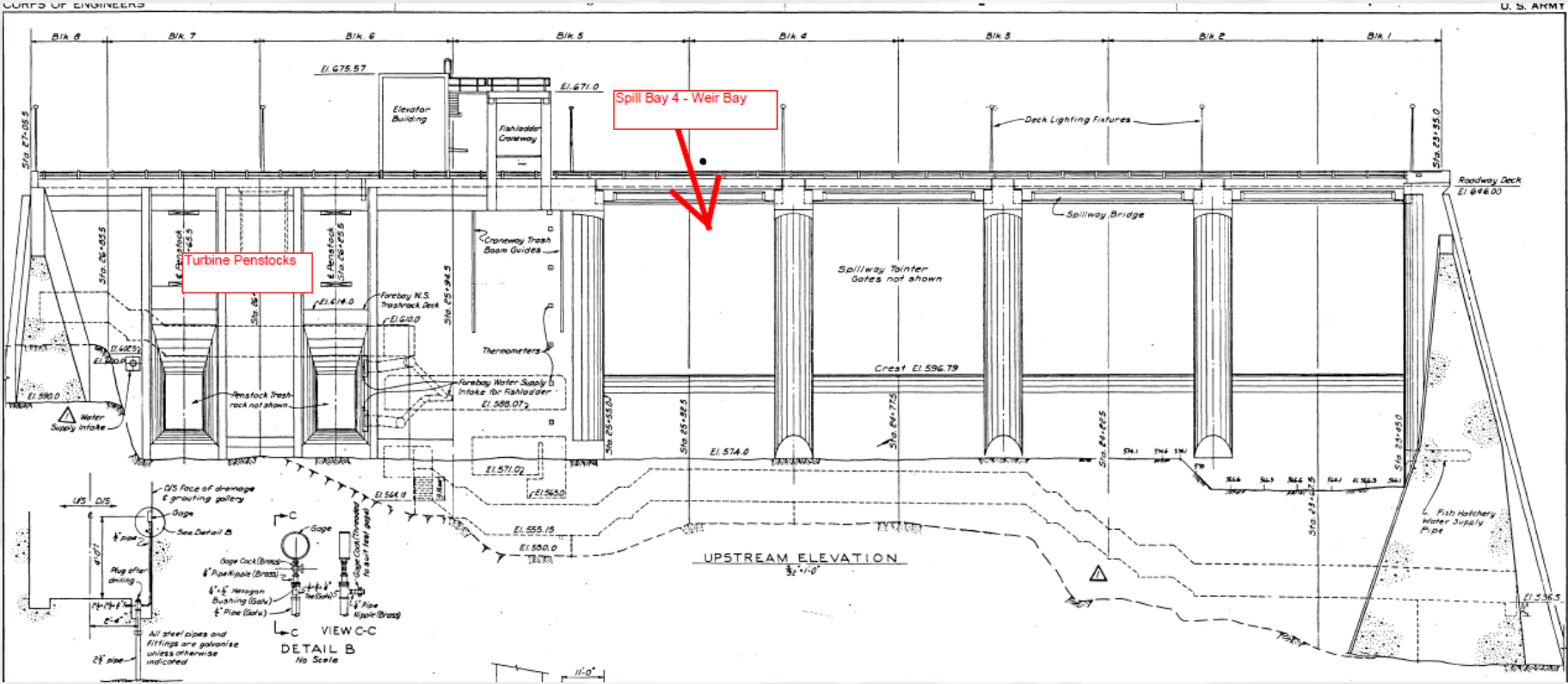


Foster DSP 30% DDR Update

- The selected alternative from the EDR phase is a new fish weir operated at higher flows and longer periods in a year.
- The weir would be designed to operate across a range of flows from 500 cfs to 860 cfs.
- Initial operations: October – May (or June) yearly.
- Operational measures may be implemented as needed; e.g. use of spill bays in conjunction with the weir, no turbine ops during all or parts of a day (day/night).
 - ▶ Post construction studies will inform passage at the new weir.
- Studies to evaluate operational measures will be developed with input from the WATER RM&E Team.



Foster Dam Upstream View



Foster Dam Downstream View

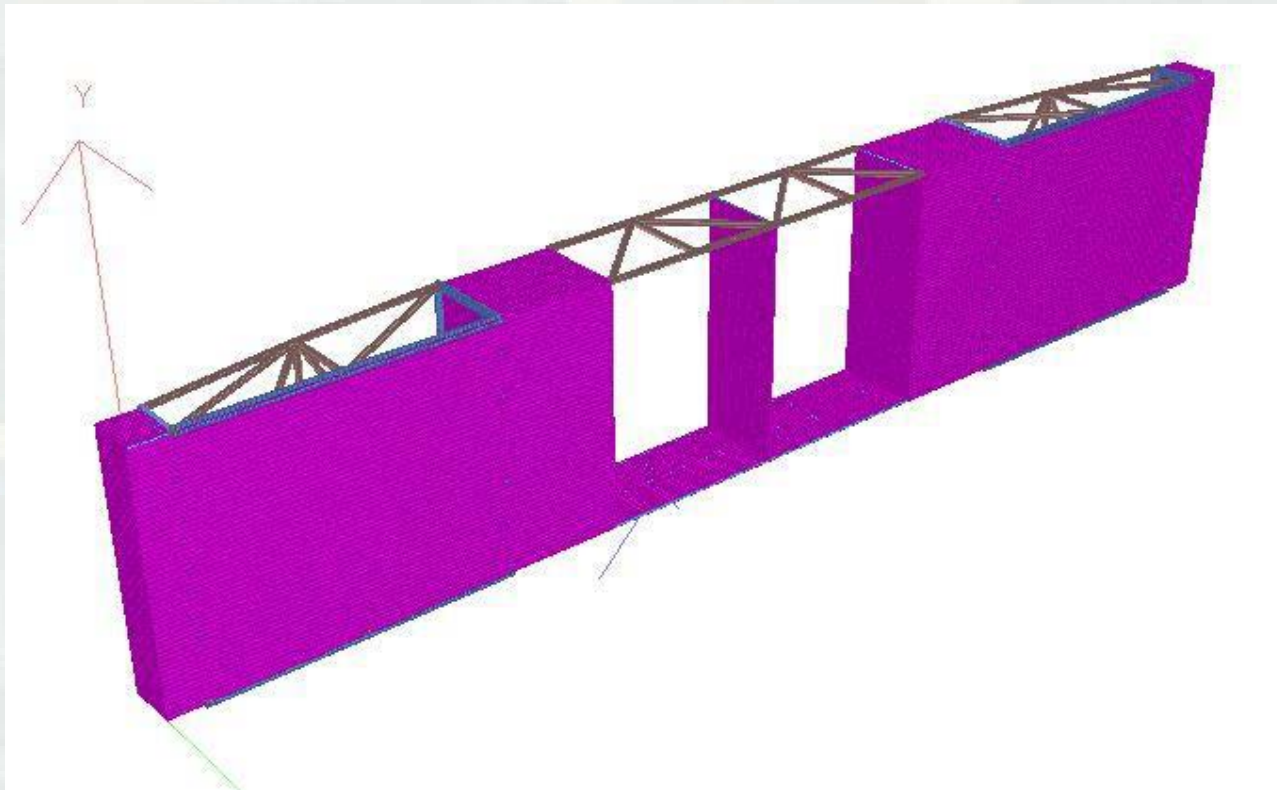


Current Fish Weir (right)



Isometric View of New Fish Weir

- ▶ Horizontal opening: 14 ft.
- ▶ Vertical depth: 7 ft.



Next Steps/Schedule

- ▶ Final EDR and Draft 30% DDR to WATER mid-October.
- ▶ Workshop with WATER at next WFFDWG (November 1).
- ▶ Draft 60% DDR following workshop; share with WATER for review in November.
- ▶ 90% DDR and 60% P&S by mid-January.
- ▶ Final plan by May 2017.
- ▶ Award construction contract by September 2017.

